



Motorcycle Tyre

2023 PRODUCT MANUAL



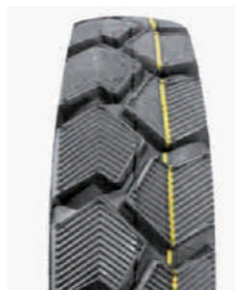
TYL-038
3.50-8



TYL-027
4.00-8



TYL-054
4.00-8



TYL-054A
4.00-8



TYL-053
3.50-10



TYL-055
3.50-10



TYL-055A
3.50-10



TYL-070
3.50-10



TYL-328
3.50-10



TYL-058
4.00-8



TYL-059 1
4.00-8



TYL-059B
4.00-8



TYL-087B
4.00-8



TYL-113
4.00-8



TYL-055A
80/90-10



TYL-052
90/90-10



TYL-055
90/90-10



TYL-055A
90/90-10



TYL-055B
90/90-10



TYL-049
3.00-10



TYL-052A
3.00-10



TYL-053
3.00-10



TYL-055A
3.00-10



TYL-111
90/90-10



TYL-114
90/90-10



TYL-052
100/90-10



TYL-052A
100/90-10



TYL-055
100/90-10



TYL-022-2
3.50-10



TYL-050
3.50-10



TYL-051
3.50-10



TYL-052
3.50-10



TYL-052A
3.50-10



TYL-055A
100/90-10



TYL-016
120/70-10



TYL-073
120/90-10



TYL-073
130/90-10



TYL-013
130/90-10

12
INCHES
SERIES



TYL-038
3.00-12



TYL-063A
4.00-12



TYL-087
4.00-12



TYL-087A
4.00-12



TYL-174
100/70-12



TYL-055B
110/70-12



TYL-060
120/70-12



TYL-068
120/70-12



TYL-177
120/70-12



TYL-063B
4.00-12



TYL-046
4.50-12



TYL-063A
4.50-12



TYL-063B
4.50-12



TYL-140-1
4.50-12



TYL-061
130/70-12



TYL-069
130/70-12



TYL-177
130/70-12



TYL-069
140/60-12



TYL-046
4.80-12



TYL-046
5.00-12



TYL-063
5.00-12

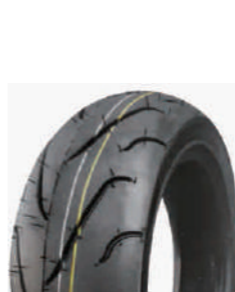


TYL-063A
5.00-12



TYL-113
5.00-12

13
INCHES
SERIES



TYL-013
110/90-13



TYL-055-1
110/90-13



TYL-012
110/90-13



TYL-061
130/60-13



TYL-140-1
5.00-12



TYL-178
5.00-12



TYL-175
80/100-12



TYL-015
90/90-12



TYL-174
100/60-12



TYL-062
130/60-13



TYL-068
130/60-13



TYL-177
130/60-13



TYL-030
130/60-13



TYL-069
130/70-13



TYL-069
140/70-13



TYL-645
150/70-13



TYL-175
90/100-14



TYL-036
100/70-14



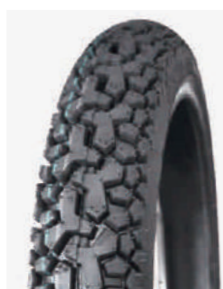
TYL-036
100/80-14



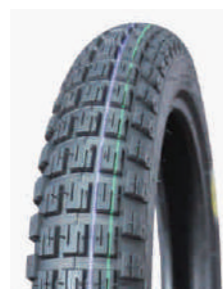
TYL-036
100/90-14



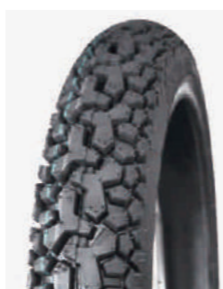
TYL-144
110/70-14



TYL-083-1
2.50-14



TYL-008
2.75-14



TYL-083-1
2.75-14



TYL-083-1
3.00-14



TYL-144
110/80-14



TYL-144
120/70-14



TYL-143
120/70-14



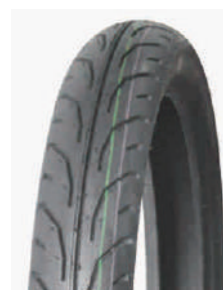
TYL-144
120/80-14



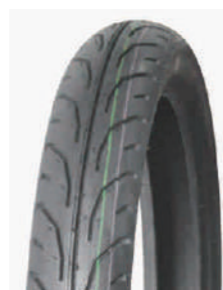
TYL-143
140/70-14



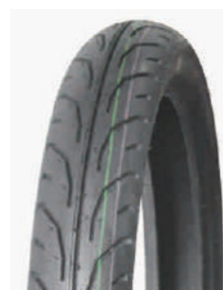
TYL-175
60/100-14



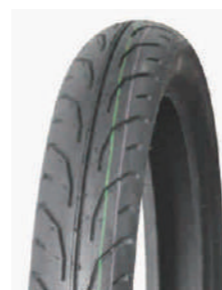
TYL-115
70/80-14



TYL-115
70/90-14



TYL-115
80/80-14



TYL-115
80/90-14



TYL-143A
140/70-14



TYL-020-1
160/60-14



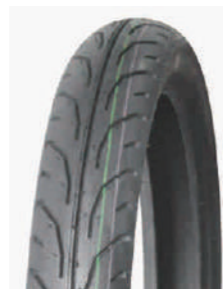
TYL-101
180/80-14



TYL-036
80/90-14



TYL-036
90/80-14



TYL-115
90/80-14



TYL-036
90/90-14



TYL-115A
90/90-14



TYL-162
90/80-15



TYL-162
90/90-15



TYL-162
100/90-15



TYL-121
130/90-15



TYL-032

150/70-15



TYL-032

160/60-15



TYL-032

170/80-15



TYL-055-1

2.50-16



TYL-055-1

2.75-16



TYL-022A

2.75-16



TYL-168

3.00-16



TYL-010A

3.50-16



TYL-065

3.50-16



TYL-083

3.50-16



TYL-101B

4.50/4.75-16



TYL-101B

5.00-16



TYL-101B

5.00/5.25-16



TYL-101B

6.00-16



TYL-055-1

70/90-16



TYL-055-1

80/90-16



TYL-022A

80/90-16



TYL-166

90/100-16



TYL-010A

100/80-16



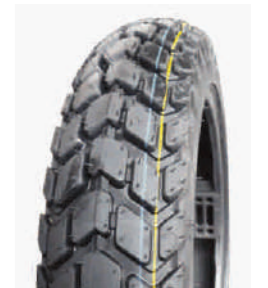
TYL-007

100/90-16



TYL-010A

100/90-16



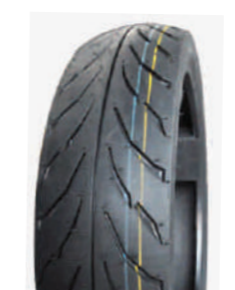
TYL-065

100/90-16



TYL-083

100/90-16



TYL-076

110/70-16



TYL-007

110/90-16



TYL-007A加宽

110/90-16



TYL-010

110/90-16



TYL-080A加宽

110/90-16



TYL-081

110/90-16



TYL-037

110/90-16



TYL-065

110/90-16



TYL-080

110/90-16



TYL-010B

110/90-16



TYL-010C

110/90-16



TYL-083

110/90-16



TYL-090

110/90-16



TYL-119

110/90-16



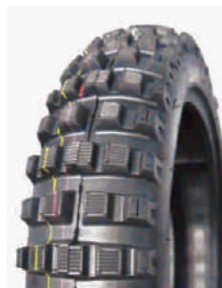
TYL-123-1

110/90-16



TYL-123A加宽

110/90-16



TYL-126-1

110/90-16



TYL-128-1

110/90-16



TYL-129

110/90-16



TYL-067A

2.25-17



TYL-067C

2.25-17



TYL-001

2.50-17



TYL-003A

2.50-17



TYL-018

110/90-16



TYL-035B

110/90-16



TYL-119

120/70-16



TYL-119

120/80-16



TYL-161

120/80-16



TYL-06KE

2.50-17



TYL-007-1

2.50-17



TYL-010A

2.50-17



TYL-012

2.50-17



TYL-024

2.50-17



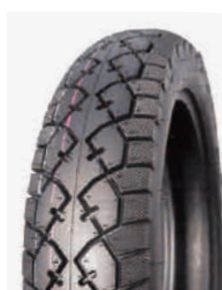
TYL-065

120/90-16



TYL-080

120/90-16



TYL-128-1

120/90-16



TYL-129

120/90-16



TYL-161

120/90-16



TYL-033

2.50-17



TYL-042

2.50-17



TYL-047

2.50-17



TYL-067A

2.50-17



TYL-075

2.50-17



TYL-119

120/90-16



TYL-161

130/80-16



TYL-081

130/90-16



TYL-081-1

130/90-16



TYL-082

2.50-17



TYL-001

2.75-17



TYL-003A

2.75-17



TYL-06KE

2.75-17

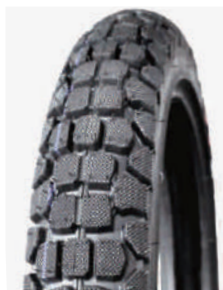


TYL-007-1

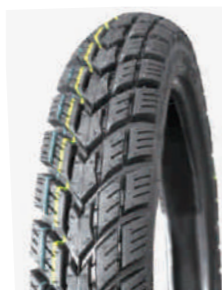
2.75-17



TYL-010A
2.75-17



TYL-012
2.75-17



TYL-022
2.75-17



TYL-024
2.75-17



TYL-042
2.75-17



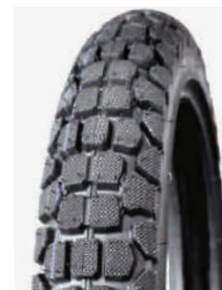
TYL-006A
3.00-17



TYL-007-1
3.00-17



TYL-009
3.00-17



TYL-012
3.00-17



TYL-012A
3.00-17



TYL-042A
2.75-17



TYL-047
2.75-17



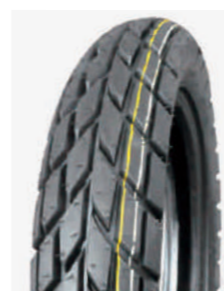
TYL-067A
2.75-17



TYL-067B
2.75-17



TYL-075
2.75-17



TYL-020
3.00-17



TYL-022
3.00-17



TYL-025
3.00-17



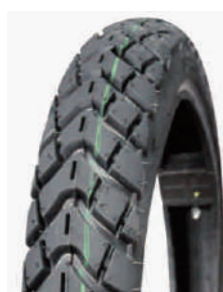
TYL-032
3.00-17



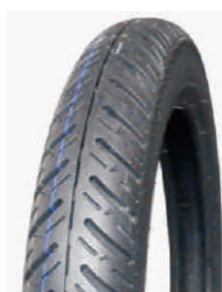
TYL-039
3.00-17



TYL-075A
2.75-17



TYL-094
2.75-17



TYL-095
2.75-17



TYL-116
2.75-17



TYL-003B
2.75-17



TYL-040
3.00-17



TYL-041
3.00-17



TYL-042
3.00-17



TYL-060-1
3.00-17



TYL-066
3.00-17



TYL-094A
2.75-17



TYL-035B
2.75-17



TYL-003
3.00-17



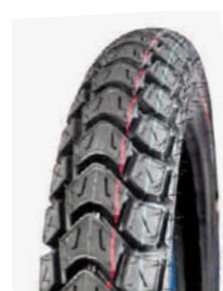
TYL-003A
3.00-17



TYL-005
3.00-17



TYL-067A
3.00-17



TYL-072A
3.00-17



TYL-080
3.00-17



TYL-084
3.00-17



TYL-094A
3.00-17



TYL-095 3.00-17 **TYL-126-1** 3.00-17 **TYL-127** 3.00-17 **TYL-145** 3.00-17 **TYL-150** 3.00-17



TYL-101B 4.50-17 **TYL-035B** 4.60-17 **TYL-109** 4.60-17 **TYL-034** 4.60-17 **TYL-110** 4.60-17



TYL-170 3.00-17 **TYL-171** 3.00-17 **TYL-004** 3.00-17 **TYL-057** 3.00-17 **TYL-1143** 3.00-17



TYL-101 5.00-17 **TYL-115** 60/80-17 **TYL-067C** 60/100-17 **TYL-115A** 60/100-17 **TYL-115** 70/80-17



TYL-033B 3.00-17 **TYL-006** 3.00-17 **TYL-035B** 3.00-17 **TYL-034** 3.50-17 **TYL-035B** 3.50-17



TYL-116 70/80-17 **TYL-151** 70/90-17 **TYL-075** 70/90-17 **TYL-116** 70/90-17 **TYL-115B** 70/100-17



TYL-101A 4.00-17 **TYL-034** 4.00-17 **TYL-101B** 4.00/4.25-17 **TYL-034** 4.10-17 **TYL-101** 4.50-17



TYL-115 80/80-17 **TYL-151** 80/90-17 **TYL-075A** 80/90-17 **TYL-115** 80/90-17 **TYL-115** 90/80-17



TYL-075A

90/80-17



TYL-092

90/90-17



TYL-018

90/90-17



TYL-093

90/90-17



TYL-105

90/90-17



TYL-034

110/90-17



TYL-080

110/90-17



TYL-150

110/90-17



TYL-105

120/70-17



TYL-143

120/70-17



TYL-017

90/90-17



TYL-056-1

100/80-17



TYL-020

100/90-17



TYL-034

100/90-17



TYL-055-1

100/90-17



TYL-018

120/70-17



TYL-105

120/80-17



TYL-143

120/80-17



TYL-031

130/70-17



TYL-109

130/70-17



TYL-080

100/90-17



TYL-081

100/90-17



TYL-105

100/90-17



TYL-125

100/90-17



TYL-091

110/70-17



TYL-143

130/70-17



TYL-077

130/80-17



TYL-077A

130/80-17



TYL-078

140/60-17



TYL-109

140/60-17



TYL-018

110/70-17



TYL-071

110/80-17



TYL-105

110/80-17



TYL-122-1

110/80-17



TYL-020

110/90-17



TYL-078

140/70-17



TYL-143A

140/70-17



TYL-144

150/70-17



TYL-144

150/80-17



TYL-144

160/60-17



TYL-144
160/70-17



TYL-144
160/80-17



TYL-079
180/50-17



TYL-079
180/55-17



TYL-097
190/50-17



TYL-059
2.75-18



TYL-067A
2.75-18



TYL-067B
2.75-18



TYL-075A
2.75-18



TYL-080
2.75-18



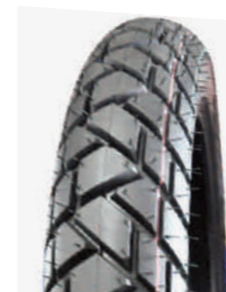
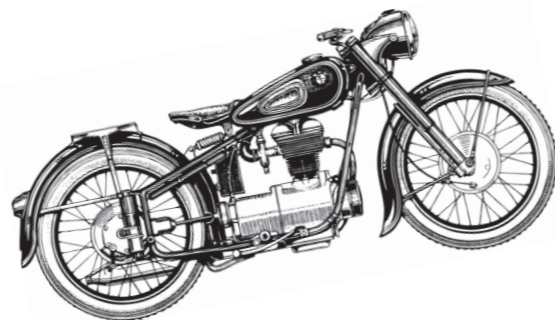
TYL-097
190/55-17



TYL-097
200/50-17



TYL-097
200/55-17



TYL-080-1
2.75-18



TYL-085A
2.75-18



TYL-086
2.75-18



TYL-086A
2.75-18



TYL-094A
2.75-18



TYL-033
2.50-18



TYL-067A
2.50-18



TYL-067B
2.50-18



TYL-075
2.50-18



TYL-116
2.75-18



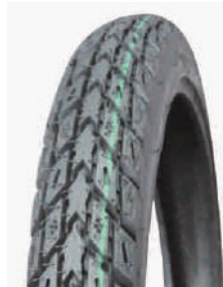
TYL-012A
2.75-18



TYL-017
2.75-18



TYL-035B
2.75-18



TYL-047
2.75-18



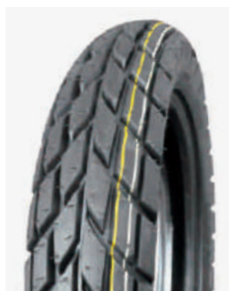
TYL-075A
2.50-18



TYL-170
2.50-18



TYL-007-1
2.75-18



TYL-020
2.75-18



TYL-033
2.75-18



TYL-012
2.75-18



TYL-018
2.75-18



TYL-003
3.00-18



TYL-004-1
3.00-18



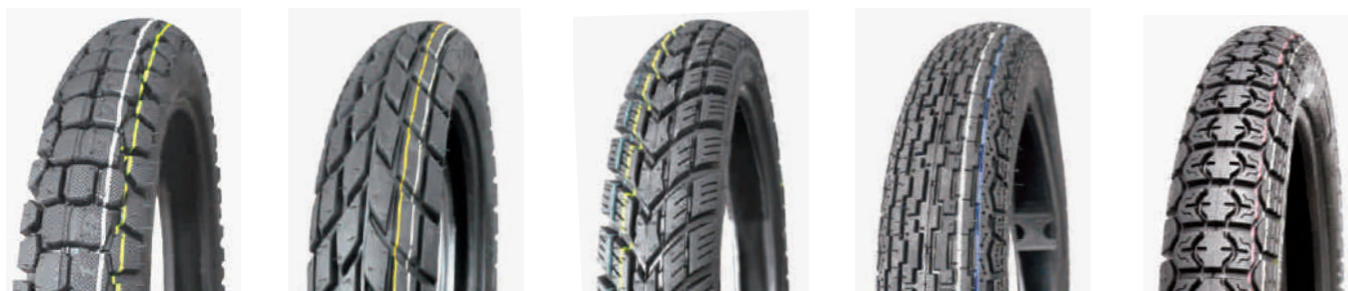
TYL-005
3.00-18



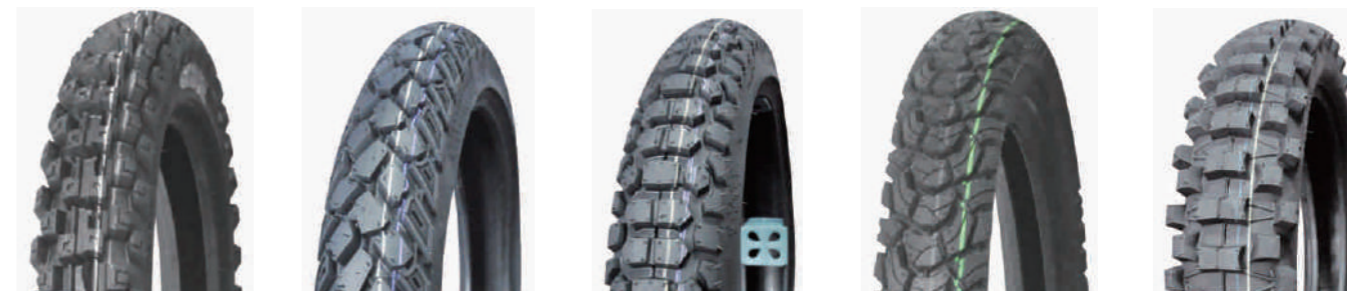
TYL-006 3.00-18 **TYL-007-1** 3.00-18 **TYL-009** 3.00-18 **TYL-010A** 3.00-18 **TYL-012** 3.00-18



TYL-080 3.00-18 **TYL-084** 3.00-18 **TYL-094** 3.00-18 **TYL-126-1** 3.00-18 **TYL-127** 3.00-18



TYL-012A 3.00-18 **TYL-020** 3.00-18 **TYL-022** 3.00-18 **TYL-023** 3.00-18 **TYL-024** 3.00-18



TYL-172 3.00-18 **TYL-1141** 3.00-18 **TYL-1142** 3.00-18 **TYL-1143** 3.00-18 **TYL-145** 3.00-18



TYL-039 3.00-18 **TYL-040** 3.00-18 **TYL-042** 3.00-18 **TYL-041** 3.00-18 **TYL-057** 3.00-18



TYL-035B 3.00-18 **TYL-029B** 3.00-18 **TYL-029** 3.00-18 **TYL-012A** 3.25-18 **TYL-027** 3.25-18



TYL-059 3.00-18 **TYL-060-1** 3.00-18 **TYL-006A** 3.00-18 **TYL-067A** 3.00-18 **TYL-072A** 3.00-18



TYL-029 3.25-18 **TYL-062-1** 3.25-18 **TYL-127** 3.25-18 **TYL-101B** 3.25-18 **TYL-026** 3.50-18



TYL-027 3.50-18 **TYL-057** 3.50-18 **TYL-080** 3.50-18 **TYL-101** 3.50-18 **TYL-127** 3.50-18



TYL-117 90/90-18 **TYL-124-1** 90/90-18 **TYL-127** 90/90-18 **TYL-176** 90/90-18 **TYL-018** 90/90-18



TYL-163 3.60-18 **TYL-101** 4.00-18 **TYL-020** 4.10-18 **TYL-022** 4.10-18 **TYL-056A** 4.10-18



TYL-059 90/90-18 **TYL-018** 100/90-18 **TYL-021** 100/80-18 **TYL-105** 100/80-18 **TYL-117** 100/80-18



TYL-110 4.10-18 **TYL-120** 4.10-18 **TYL-035B** 4.10-18 **TYL-101** 4.50-18 **TYL-110** 4.60-18



TYL-021 100/90-18 **TYL-056B** 100/90-18 **TYL-105** 100/90-18 **TYL-110** 100/90-18 **TYL-117** 100/90-18



TYL-056A 4.60-18 **TYL-035B** 4.60-18 **TYL-028** 90/90-18 **TYL-029** 90/90-18 **TYL-045** 90/90-18



TYL-056A 110/90-18 **TYL-061-1** 110/90-18 **TYL-056B** 110/100-18 **TYL-145** 110/100-18 **TYL-149** 110/100-18



TYL-169

120/80-18



TYL-110

120/90-18



TYL-145

120/90-18



TYL-145

120/100-18



TYL-056B

120/100-18



TYL-080-1

80/100-19



TYL-074

80/100-19



TYL-080-1

90/90-19



TYL-026A

90/90-19



TYL-009

90/90-19



TYL-179

130/80-18



TYL-048

130/90-18



TYL-100A

140/80-18



TYL-179

140/70-18



TYL-100

140/80-18



TYL-146

100/90-19



TYL-018

100/90-19



TYL-147

110/90-19



TYL-017

110/90-19



TYL-148

110/90-19



TYL-035B

2.75-19



TYL-101

3.25-19



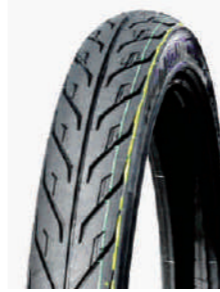
TYL-026A

3.00-19



TYL-035B

3.00-19



TYL-014

2.75-21



TYL-056A

2.75-21



TYL-074

2.75-21



TYL-035B

2.75-21



TYL-101

4.00-19



TYL-101A

4.00-19



TYL-167

70/100-19



TYL-080-1

80/90-19



TYL-074

80/90-19



TYL-022

3.00-21



TYL-074

3.00-21



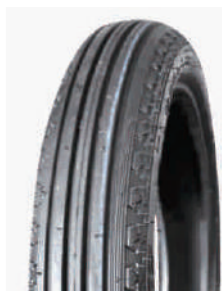
TYL-173

3.00-21



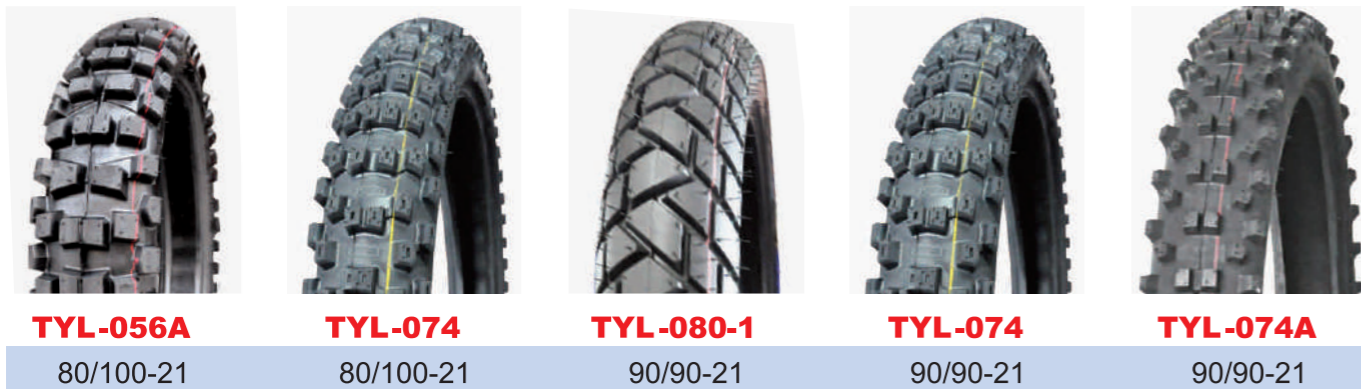
TYL-035B

3.00-21



TYL-067B

3.00-21



TYL-056A 80/100-21 **TYL-074** 80/100-21 **TYL-080-1** 90/90-21 **TYL-074** 90/90-21 **TYL-074A** 90/90-21



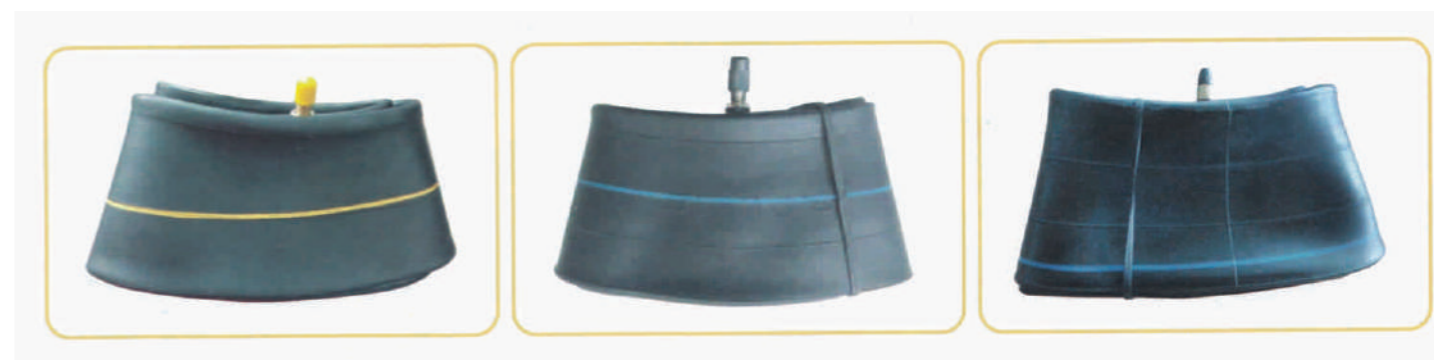
TYL-173 90/90-21 **TYL-056A** 90/100-21 **TYL-074** 90/100-21 **TYL-173** 90/100-21



气门咀型号/VALVES



内胎 / TUBE



内胎型号列表

内胎规格 Size of Tube	气门咀型号 Model of valves	内胎规格 Size of Tube	气门咀型号 Model of valves	内胎规格 Size of Tube	气门咀型号 Model of valves
3.00-8	TR87	2.50/2.75-16	TR4	3.75-19	TR4
3.50/4.00-8	TR87	3.00-16	TR4	2.50-19	TR4
4.80/4.00-8	TR87	3.25/3.50-16	TR4	2.75/3.00-19	TR4
4.80/4.00-8	TR13	3.50-16	TR4	3.25/3.50-19	TR4
3.00-10	TR87	110/90-16	TR4	2.75/3.00-21	TR4
3.50-10	TR87	120/130/90-16	TR13	16*3.00	CR202
4.00/4.50-10	TR13	4.00/4.50-16	TR4	16*2.50/2.70	CR202
120/130/90-10	TR87	1.85/2.00/2.25-17	TR4	16*2.125	CR202
3.00-12	TR4/TR87	2.25-17	TR4	18*2.125	CR202
4.00/4.50-12	TR13	2.25/2.50-17	TR4	18*2.5	CR202
5.00-12	TR13	2.50-17	TR4	26*1 1/2	TR1
120/130/70-12	TR87	2.75-17	TR4	28*1 1/2	TR1
3.50/3.75-12	TR13	2.75/3.00-17	TR4	27/28*3.25/3.5	TR4
110/90-13	TR87	3.00-17	TR4	60/80-17	TR4
130/60-13	TR87	3.50-17	TR4	70/80-17	TR4
155/165-13	TR13	4.00/4.10-17	TR4	90/80-17	TR4
2.00-14	TR4	4.00/4.50-17	TR4	60/90-17	TR4
2.25-14	TR4	2.50-18	TR4	70/90-17	TR4
2.25/2.50-14	TR4	2.50/2.75-18	TR4	80/90-17	TR4
2.75-14	TR4	2.75-18	TR4	90/90-17	TR4
2.75/3.00-14	TR4	2.75/3.00-18	TR4	60/90-18	TR4
3.00-14	TR4	3.00-18	TR4	70/90-18	TR4
4.50/5.00-14	TR13	3.25-18	TR4	80/90-18	TR4
5.50/5.00-14	TR13	3.50-18	TR4	90/90-18	TR4
130/90-15	TR4	4.10-18	TR4	60/100-17	TR4
2.25/2.50-16	TR4	4.60-18	TR4		



Tread cut wounds
Tire surface cut wounds by external things



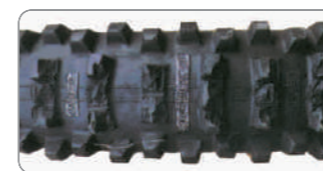
Tire surface damage
Tires stuck sharp objects, do strong traction action and damage. Commonly occurring in the back tire.



Tire lip lesion (by pry bars)
Improper operation when tires and rims assembly, causing tire labial ministry picked great damage



Tire lip lesion (Machinery installation tires)
Improper operation when tires and rims assembly, Causing tire labial ministry damage by tires machine, unloading tires machine



Tread fall off
The special tires suit for sand, muddy, was applied to hard pavement. Cut wounds by stones or sharp objects, produce tread fall off.



Tread bottom cracking
Tires running with low air pressure long time, killing tread bottom



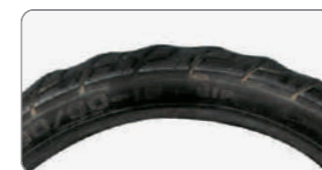
Tire lip damage bending
Tires lip bending were caused by external extrusion



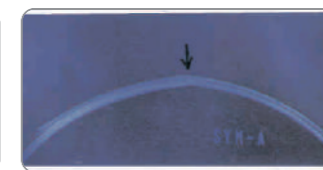
Tire lip wire break
When tire and tire rims engage with discomfort state, tire was forced by high-pressure air injected, causing stress concentration in discomfort joint place ,making wire at tire lip broke.



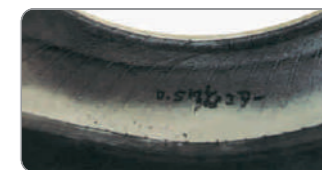
Abnormal abrasions (one side)
Faults on vehicle parts, cause tires unilateral abrasion.



Abnormal abrasions (polygonal)
Faults on vehicle parts, cause tires polygonal abrasion.



Tire lip wire break (X-ray)
When tire and tire rims engage with discomfort state, tire was forced by high-pressure air injected, causing stress concentration in discomfort joint place ,making wire at tire lip broke.



Wrapped drape inside
Tires run with low air pressure, causing tire body buckling and chicken claw marks on inside face.



Tire shoulder pattern cracked
Tires running with low air pressure long time, killing tire shoulder pattern parts and tire, cause tire shoulder cracked.



Tire shoulder scratches
Mutual friction between vehicle and tire, cause tire shoulder scratches



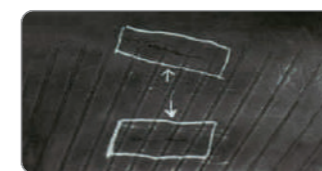
Sandwiched eyewinker



Sandwiched eyewinker
When assembly tire, there's sandwiched eyewinker between inner tubes and tires which not been clear, causing damages on tire and inner tube.



Yarn was breaking by slams (out)
When tire in low air pressure condition go through the pavement dent or obstacles, tires bear thumping excessive force, causing tire body cotton/yarn was cut off by the wheel rim.



Mouse bites
Because of tire store improper, tire was bitten by the mice



Pierced cause yarn breaking
When pierce things was not taken out after tyre was pierced, tyre continue to run, leading to pierce content damage tire body.

